

In order to make spellchecking occur automatically in Moodle's textboxes, spellcheck has been removed from the editing toolbar. As a result, if you mistype or misspell a word when you are posting to a forum or entering other text online, the mistake will be underlined in red. Right click (or ctrl+click on a Mac) on the word to select the correct spelling.

Enable Automatic Spellchecking

If you log into Moodle using Firefox—the browser we recommend—or Chrome, spellchecking will more than likely already be activated. If you find that you do need to turn spellchecking on, follow these instructions:

Firefox

1. If you have a **Firefox tab** at the top left corner of the page, click on it and select **Options > Options** (Figure 1).

If your Firefox options appear in row of pull-down menus, choose **Options** from the **Tools** menu.

If you have a Mac, choose **Preferences** from the **Firefox** menu.

2. Click on the **Advanced** icon, then click on the **General** tab (Figure 2).
3. Check the box next to **Check my spelling as I type**.
4. Click on **OK** to save your settings.

Chrome

Very clear instructions for activating the spellchecker in Google Chrome are available at <https://support.google.com/chrome/answer/95604?hl=en>.

Internet Explorer

You'll need to know which version of Internet Explorer (IE) you are running in order to set up spellchecking. To find that out, click on the **Settings** icon in the upper right corner of IE (or on the **Help** menu, if available) and click on **About Internet Explorer**.

If you are running IE version 10, you can activate the spellchecker "add-on" feature. This video will walk you through the process: <http://www.youtube.com/watch?v=lrKWSG3pp-E>.

If you are using an earlier version of IE, downloading "Speckie" appears to be the best solution (<http://speckie.com/dload>). This website offers step-by-step instructions for downloading and using Speckie: <http://www.howtogeek.com/76223/add-spell-checking-to-internet-explorer-9/>.

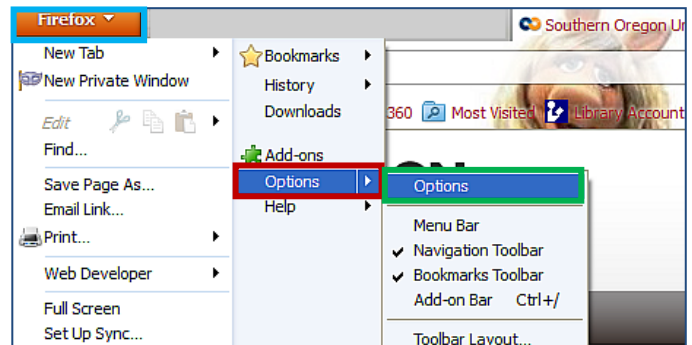


Figure 1: Firefox Options

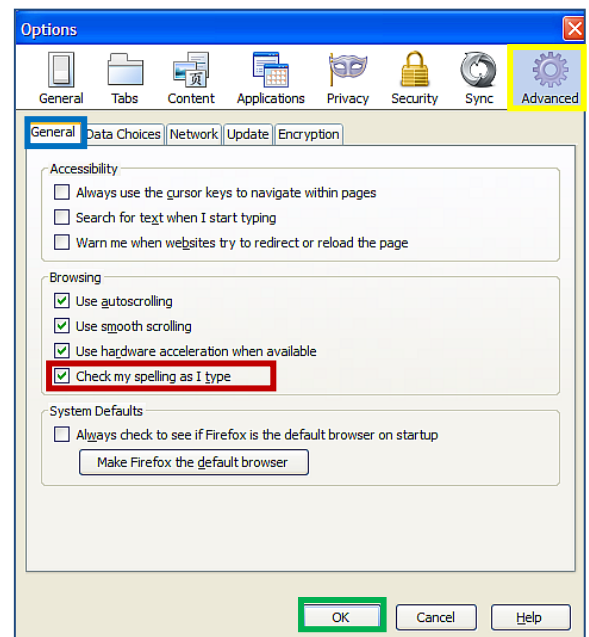


Figure 2: Check Spelling Option