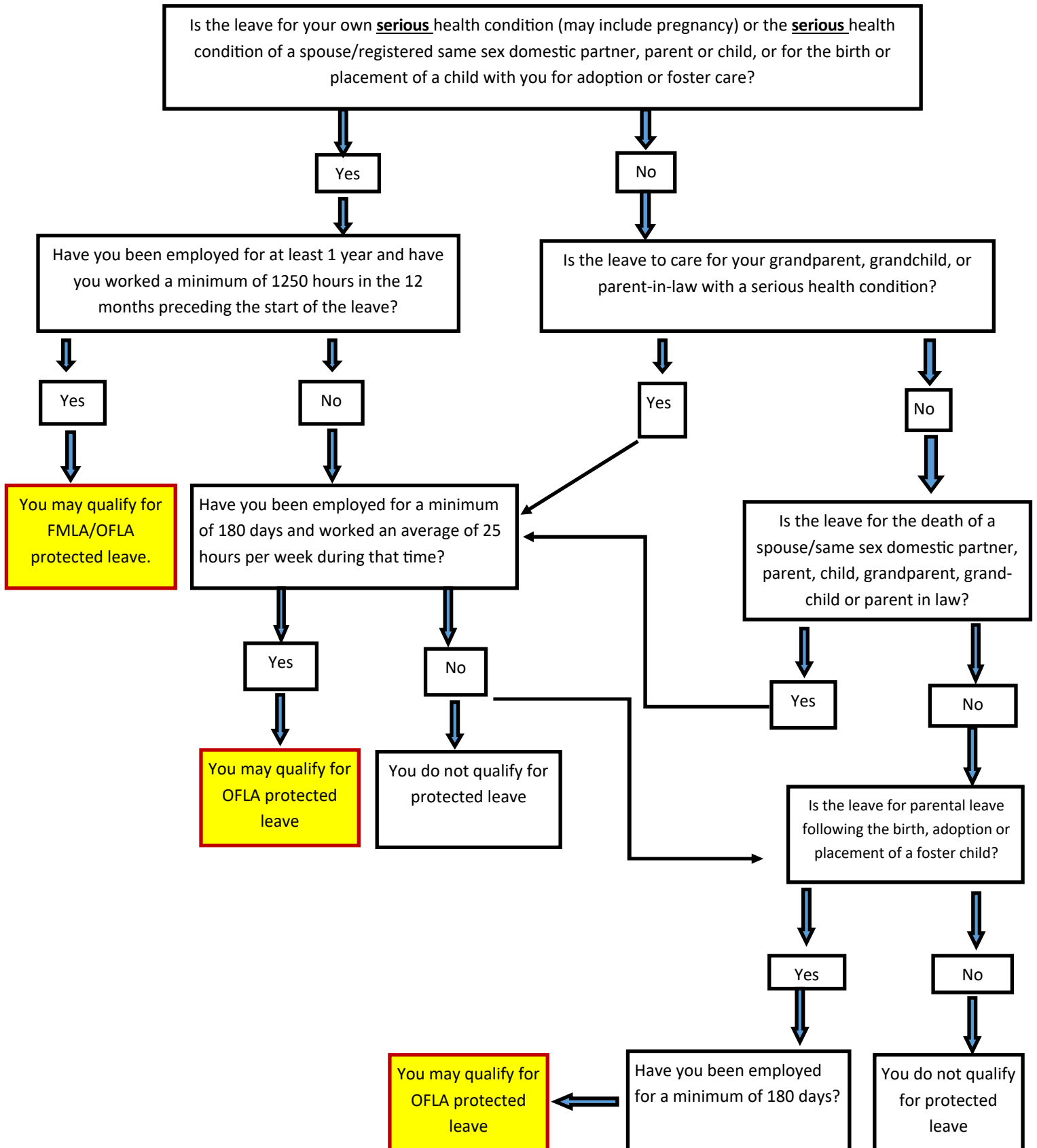


Am I Eligible for FMLA or OFLA Protected Leave?



NOTE: There are additional protected leaves not referenced in this chart such as Oregon Military Family Leave (OMFLA), Service Member Care Leave (SMCL) and qualifying exigencies leave related to the foreign deployment of a military member who is the employees spouse. If you have any questions regarding FMLA/OFLA eligibility, required documentation or general questions about FMLA/OFLA, please contact Michele Barlow, Assistant Director of HR/Accessibility Coordinator at 541-552-8119 or email barlowm@sou.edu